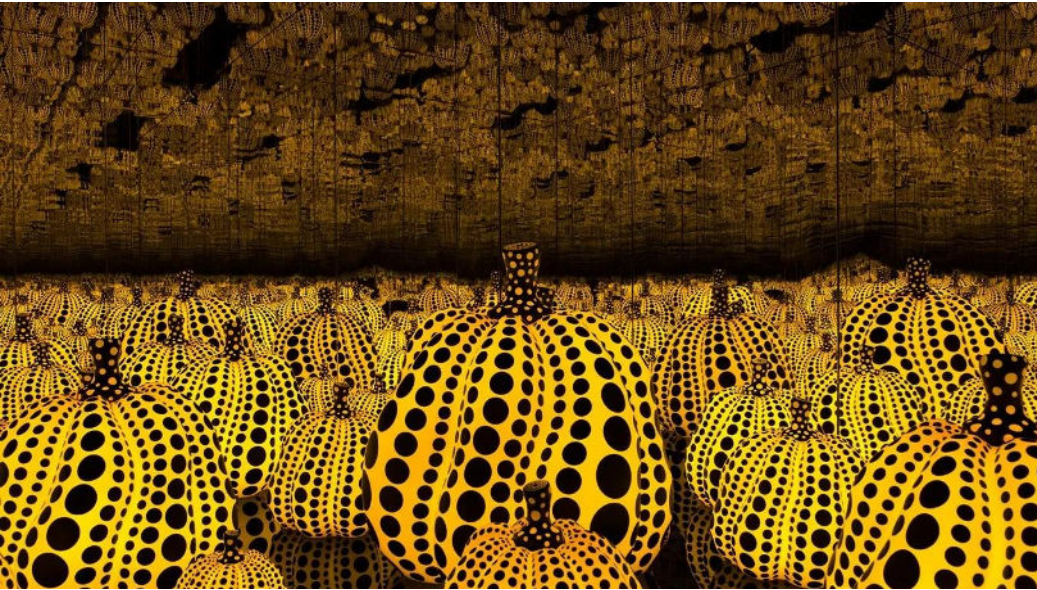




Spots and Dots

Learning Objective
To create Yayoi Inspired pumpkins
pinch pots in an infinity room



KUSAMA REALLY LIKES PUMPKINS!



Yayoi Kusama - Pumpkin, National Art Center, Tokyo, Japan

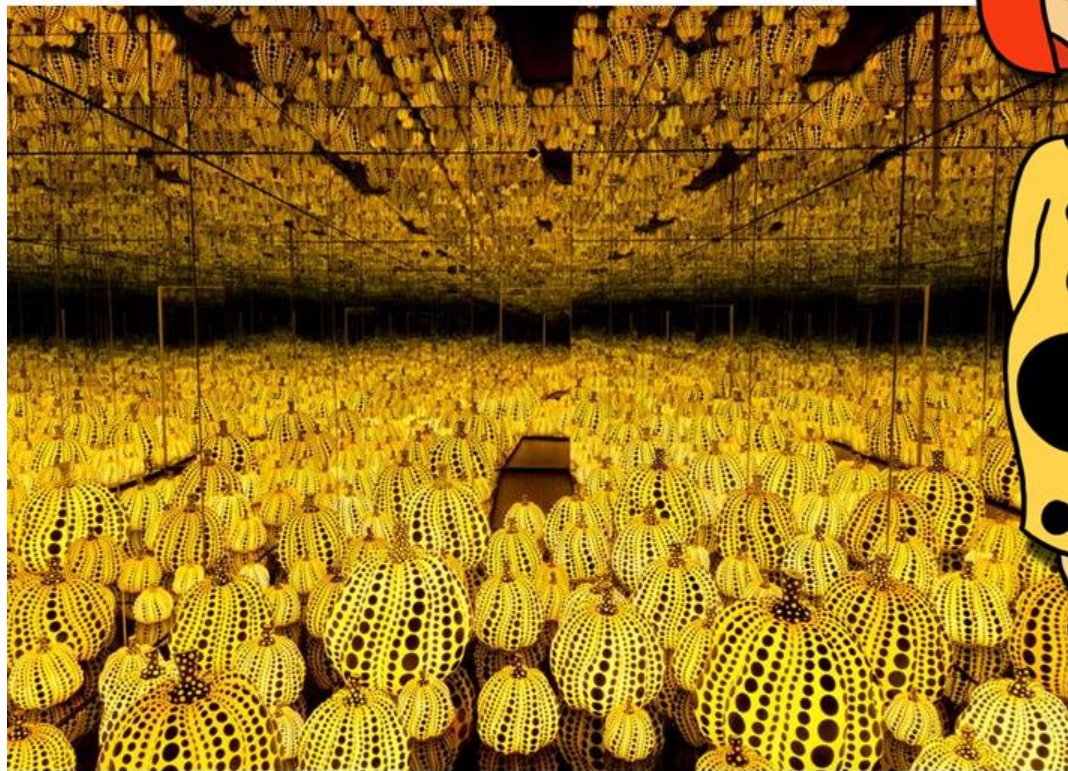
"I LOVE PUMPKINS BECAUSE OF THEIR HUMOROUS
FORM, WARM FEELING, AND A HUMAN-LIKE QUALITY
AND FORM. MY DESIRE TO CREATE WORKS OF
PUMPKINS STILL CONTINUES. I HAVE ENTHUSIASM AS
IF I WERE STILL A CHILD."



KUSAMA CREATES UNIQUE ROOMS CALLED
INFINITY ROOMS. DO YOU KNOW
WHAT **INFINITY** IS?



INFINITY MEANS IT GOES ON (OR LOOKS LIKE
IT GOES ON) **FOREVER** AND **EVER!** HOW
MANY PUMPKINS DO YOU THINK ARE IN THIS ROOM?



HER **INFINITY** ROOMS HAVE
MIRRORS FROM TOP TO BOTTOM. THE
MIRRORS MAKE HER PUMPKINS LOOK LIKE
THEY GO TO **INFINITY!**



IN THIS ROOM, THE DOTS SURROUND AND
ENGULF YOU...IT'S VERY HARD TO TELL
WHERE YOU END AND WHERE THE REST OF
THE ROOM BEGINS!



LET'S VISIT SOME OF KUSAMA'S INFINITY ROOMS!

(Click image in slideshow mode)



https://www.youtube.com/watch?v=8VwJMw_fLvI

HER INSTALLATIONS ARE TEMPORARY.
THEY ARE ONLY ON DISPLAY FOR A VERY
SHORT TIME.



Yayoi Kusama: Look Now, See Forever' Installation View

KUSAMA CREATES LARGE ROOMS THAT VISITORS MAY WALK THROUGH. THESE ARE CALLED ART INSTALLATIONS.



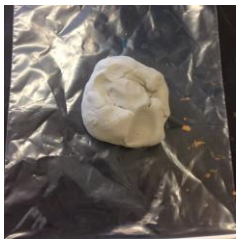
Narcissus Garden by Yayoi Kusama.



Learning Objective

To create Yayoi Inspired pumpkins pinch pots in an infinity room





Gather your large chunk of clay and place it on the zip lock bag. This will prevent it from sticking to the table while working.



Take the chunk of clay and roll it between your palms to form a sphere.



The sphere should be nice and round. If there are any wrinkles smooth them out with your fingers.



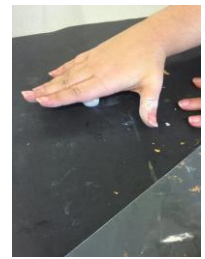
As you pinch with your talking hand make sure your fingers go to the top of the pot. You want to make a pattern. A gentle pinch and then a little turn. You should barely be able to see finger marks.



You want to pinch and turn until have nice even sides and the opening of your pot looks something like this. Don't try and pinch it too thin.



Take your pinch pot and set it mouth side down on your bag. Next take the small piece of clay and roll it into a sphere. This will be the stem of your pumpkin.



Take the little sphere and start rolling it on the plastic bag or on the table. Keep your fingers together. You want it to look like a tootsie roll when your are finished.



Your stem should be a cylinder and look something like this. Next, get the popcicle stick



Take the stick and lightly scratch the top of the pot where you want to place the stem. Also scratch the end of the stem that you want to attach to the pot. This is called "scoring" the clay.



Take the water container and wet the end of the stick. Place a drop of water on the score marks of both the pumpkin and the stem.



Take the stem and gently push and wiggle the wet sides together so that they stick.



Take the end of the stick and gently make lines that start and the stem and go to the bottom of the pinch pot. We are trying to create the sections of the pumpkin. Do this all the way around.



Your pumpkin should look something like this when you are finished. Bring it to the sculpture rack and ask for help to get your name on it.

Pinch Pot Pumpkins Instructions

Create an infinity room for your pinch pot pumpkin

<https://youtu.be/N-upApoKrn0?feature=shared>