

# *Altered Portraits*



# Distorted Portraits



**What** - Students to gain an understanding of what a portrait is and what is meant by the word distortion. By looking at the Artist Loui Jover

**How** - Students to highlight the key features of distorted portrait and to effectively collage a distorted portrait in the style of Loui Jover.

**Why** - Student to develop their use of different marks and collage techniques to create a distorted portrait. They will develop their confidence of creating patterns within their work to emphasis the distortion of the face to link to the artist work

# **Distorted Portraits**

What are the key words we can use  
when describing a portrait as  
distorted?

This will give you an understanding  
of how to create and review your  
work

# Distorted Portraits

What are the key words we can use when describing a portrait as distorted?

This will give you an understanding of how to create and review your work

Different shape of a face

Sides of the face different

Features too Big

Not in proportion

Eyes in different places

Does not need to look realistic

Not symmetrical

Gaps in the face shape

Features too Small

Parts of the face are missing

Features in the wrong place

# Loui Jover

Loui Jover is an Australian painter and artist. He was born in Serbia but moved to Australia aged 1 where he grew up. He is known for his artwork in ink wash paintings on vintage book pages. Having taken up drawing as a child, Loui Jover has been an artist all of his life. He has continued to develop and evolve his artistic style through his years of practice and his works show a depth and understanding of subject and medium.

Most of his art embodies the human face or the human form and the myriad of emotions expressed in there. Even though Loui is a self-proclaimed recluse, he is rooted in society, drawing inspiration from people around him. "I am an urban dweller and a consumer of popular culture so I reflect this in my work — notions of beauty, melancholia and emotional reactions. The face is the perfect conduit for this and no one can express the nuance of emotion on their faces like women can," says Loui.





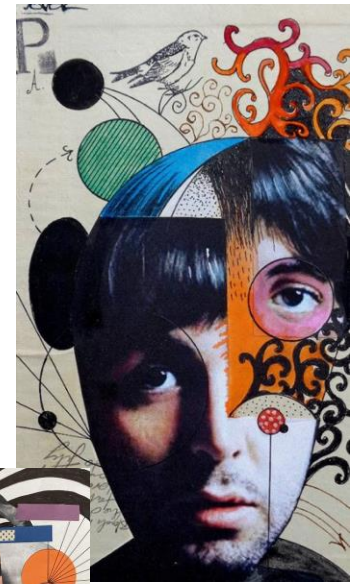
Louji lover

# Task

## Key words

Portraits  
Faces  
Distort  
Space  
Collage  
Pattern  
Shapes  
Shapes  
Colour  
Line  
Zen tangles  
Proportions  
Weight of line

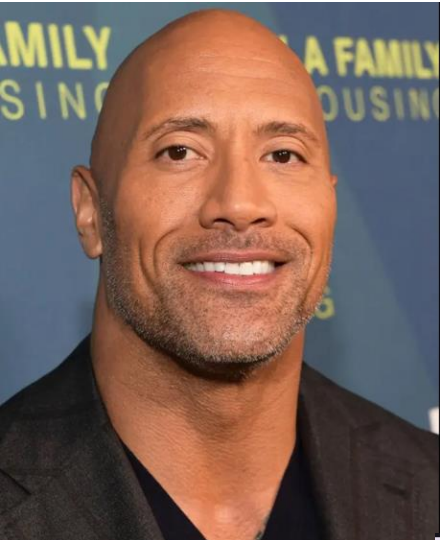
You are to develop an A4 collage using the images in the style of the Artist Loui Jover. You must think about the use of space to create distortion within the face. Once you have stuck down your shapes and parts of the face you are to add in patterns think of Zen tangles, letters and filled shapes. You can use fine liners, pencils graphite and coloured pencils to create your patterns. Think about weight of line, shape, form and colour. How does the colour link to the colours you have used in the collage. See Miss Howes Example



**What** - Students to gain an understanding of what a portrait is and what is meant by the word distort. By looking at the Artist Loui Jover  
**How** - Students to highlight the key features of distorted portrait and to effectively collage a distorted portrait in the style of Loui Jover.  
**Why** - Student to develop their use of different marks and collage techniques to create a distorted portrait. They will develop their confidence of creating patterns within their work to emphasis the distortion of the face to link to the artist work







Celebrity faces