

# MECHANICAL INSECTS

---



# Learning Objective

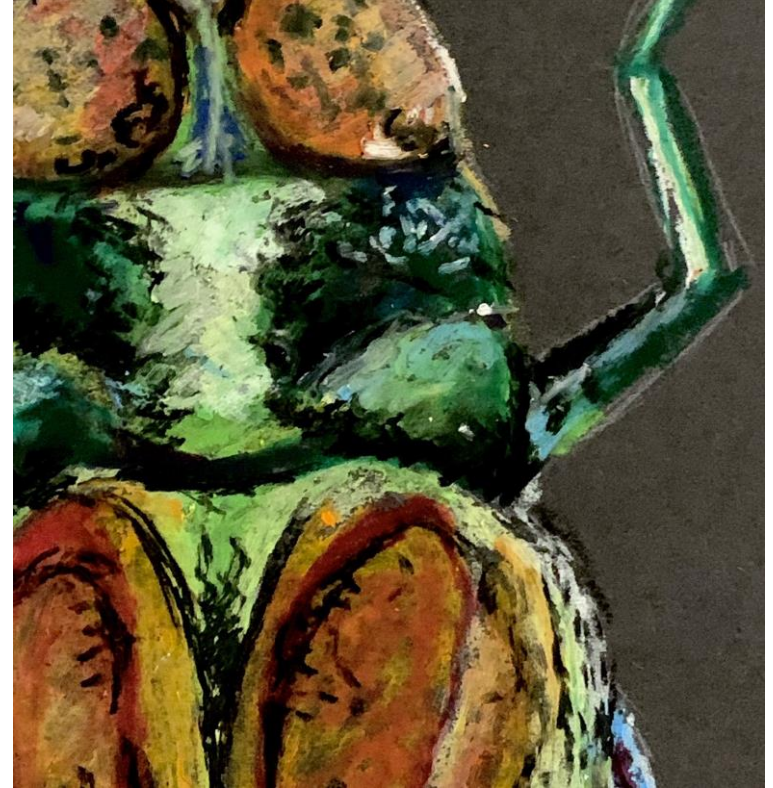
To draw a close up of an insect using oil pastels

How do you think this drawing has been created?

What are the challenges when using oil pastels?

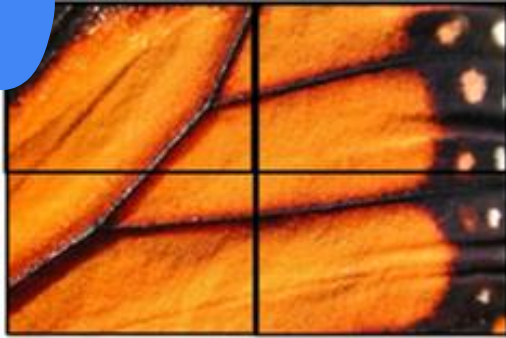
What do you like?

What would you do differently?



# Oil pastel close-up

# ENLARGE



- Use the grid to accurately copy and enlarge the image above lightly in pencil.
- Work with a light colour to sketch your outline
- Gradually build layers of colour - lightest to darkest
- Blend the colours

