

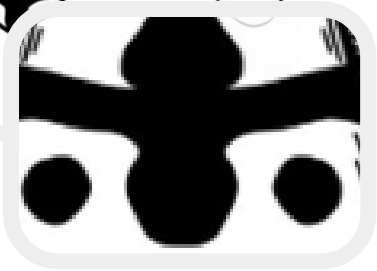
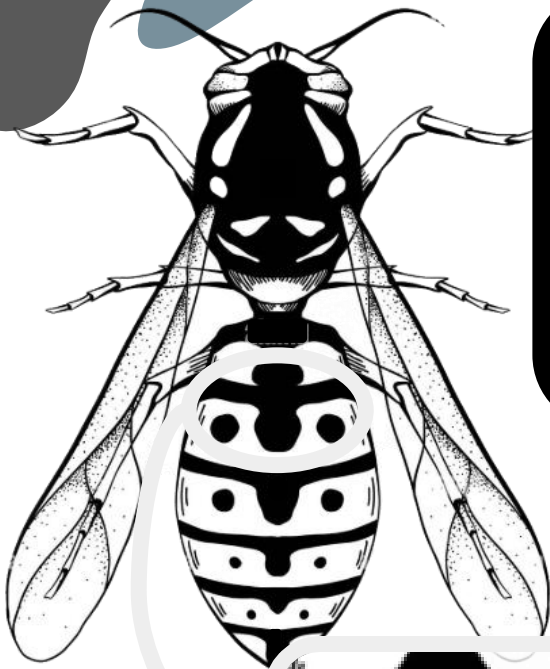
MECHANICAL INSECTS



PATTERN

Patterns are all around us, in nature as well as in art and design.

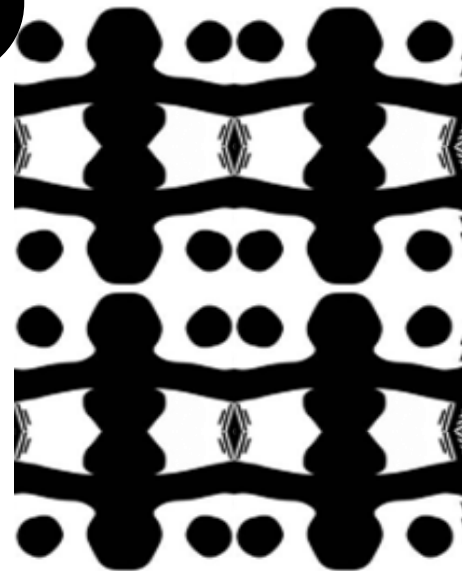
We see patterns where shapes, lines or colours are repeated. How complicated a pattern is depends on what is repeated and the way in which it is repeated.



MOTIFS

The starting point of any **pattern** is the single element that will be repeated. This is called a **motif**. A motif can be repeated and arranged in many different ways in order to create different types of pattern.

03

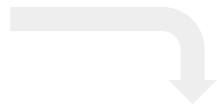


PATTERN:

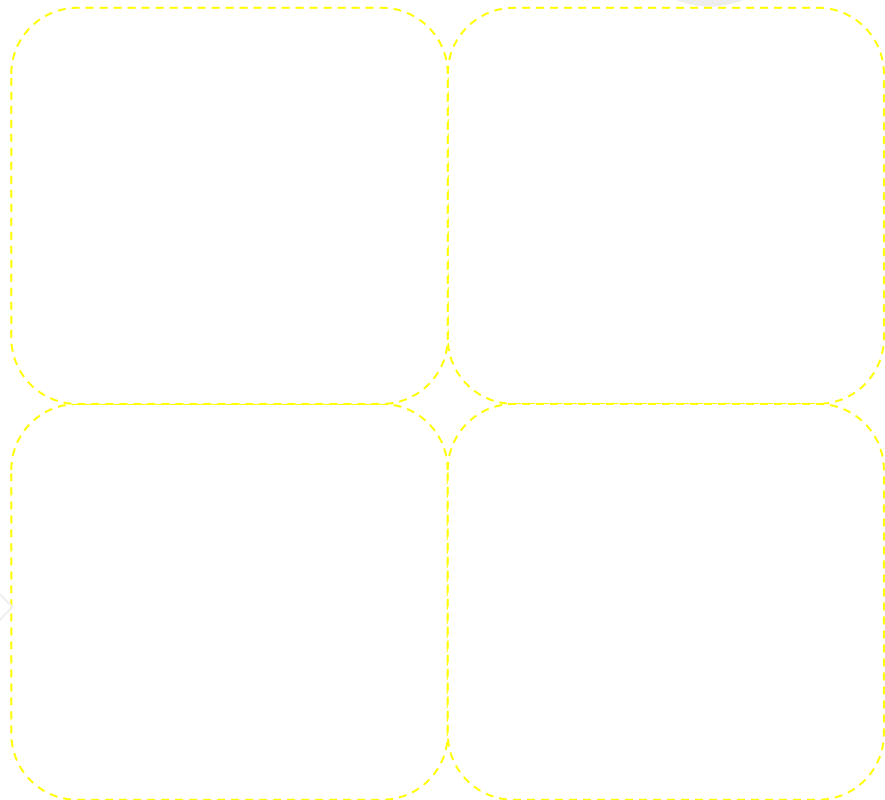
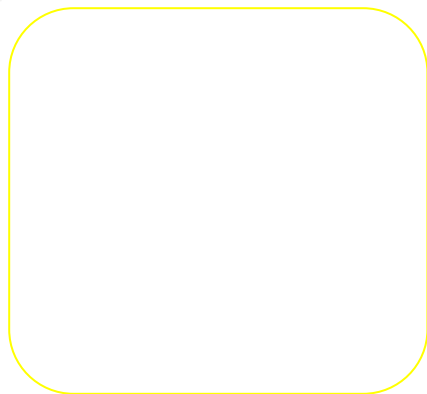
Create your own pattern from the image below

03

Select shapes from a close-up section to use as a motif. Copy and repeat your motif to create your pattern. This could be a mirror image or more linear. You will then turn this into a lino print design.



Motif



LINO PRINT: step-by step guide (part 1: Cutting)



Trace your design onto one side of the lino block



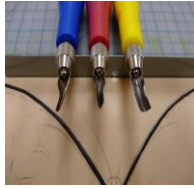
Outline with a sharpie



This is how it should look



Outline with a sharpie



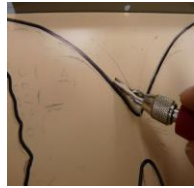
Choose 3 lino cutters:
1. Small blade (for details)
2. V-shape blade for outlining
3. U-shape blade for larger areas



Once you have finished the 'colour' side start work on the other side



Fill in all black shapes



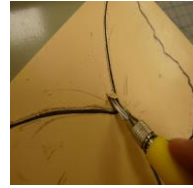
Start cutting with a V-shape blade. Outline the shapes. Cut away from yourself - rotate the printing block as you cut.



Cut out all the shapes that are not black



Trace outline of colour shapes onto the other side of lino block



After you are done outlining - use U-shape blade to remove the background. Use short cuts.



This is how it should look. Now you're ready to print!

Simplify the observational drawing you made at the start of this project: Use a marker pen to trace over your drawing to help simplify the detail and make the lines thicker

Follow the instructions on the next page to make a 2 colour print of your image.



LINO PRINT: step-by step guide (part 2: Printing)



Coat roller evenly with ink - 'lift and roll'



Transfer ink evenly onto lino block



Place the printing block onto the alignment board. Align the corners.



Place a corner of printing paper in the upper corner of the board. Let the paper fall onto the printing block.



Use a clean roller to transfer the ink onto the paper



Lift the paper



Let the print dry
Wash the printing block



Use black ink.



Apply black ink to the other side of the block



Align block the same way and put colour print on top



Lift the print carefully



Let it dry and sign your name and date on bottom right

